



Link® | **Auxiliary
Suspensions**
With Swift Mount
Technology

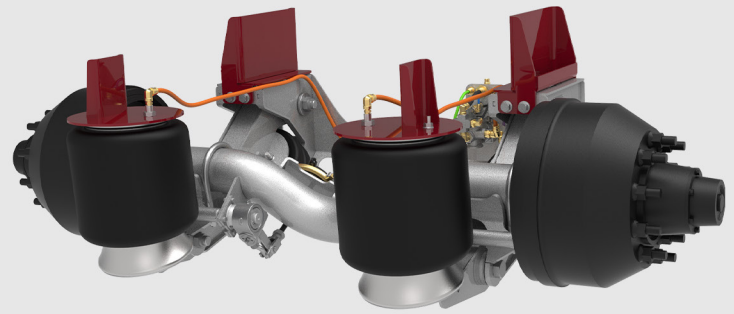
20K NON-STEER
PRE-PLUMBED INTEGRATED AIR KIT

- + **SWIFT MOUNT**
- + **SWIFT RESPONSE**
- + **SWIFT DELIVERY**
- + **SWIFT INSTALL**

driven to *outperform*®

LINK Auxiliary Suspensions

With Swift Mount Technology

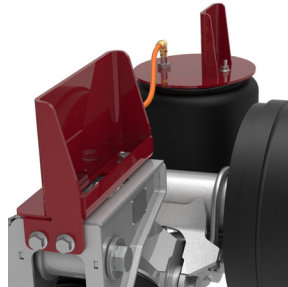


Link® 20K Non-Steer

Link's family of non-steer lift axles provides distinct advantages in convenience and performance. Fast shipping, quick installation and responsive customer support, combined with the reliability and durability Link is known for, results in a lower overall cost of ownership.

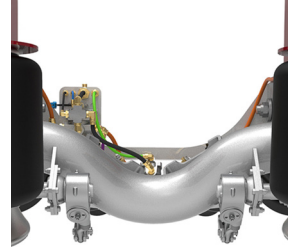
The 20K non-steerable lift axle has proven its reliability for both on and off-highway applications. The suspension incorporates interchangeable ride height brackets to accommodate a wide range of ride heights for nearly any truck. The suspension and can be used in tag or pusher positions. The pre-plumbed integrated air kit combined with the compact mounting envelope saves on valuable frame rail space and installation time.

The Non-Steer lift axle is also available in 13K or 17K capacity. The unique design of the model 5500 allows 11" to 15" of ride height and 15" of travel for applications encountering uneven terrain. The direct arm to axle connection increases stability and reduces maintenance. The suspension is available with 15" or 20" wheels for maximum lift and clearance.



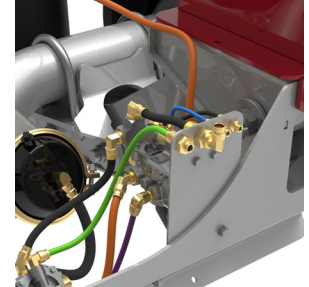
SWIFT MOUNT TECHNOLOGY

Swift mount brackets reduce installation time by up to 20%; install any Link lift axle with 4 sets of brackets.



RUGGED CAST LIFT ARMS

For maximum lift and clearance, the 20K is available with 6" or 9" drop center axles; straight axles are also available.



BULKHEAD AIR KIT FITTINGS

The bulkhead air kit allows for push-to-connect fittings and centralizes multiple air outlets.

PUSHER OR TAG POSITION

Four interchangeable ride height frame brackets allow 7" to 15" of ride height and 15" of travel.

COMPACT MOUNTING ENVELOPE

Save on valuable frame rail space with an industry competitive mounting envelope of 24.6".

TRAILER MOUNTS AVAILABLE

Trailer mounts are available for 15" to 19.5" ride heights.

SPECIFICATION

	20K NON-STEER INTEGRATED AIR
WEIGHT (BASE UNIT)	1,129 LBS
TRAVEL	10 INCHES
LIFT	6 INCHES
ENVELOPE	24.6 INCHES
RIDE HEIGHT	7 - 15.5 INCHES

Note: All the weights are for the base suspension with hubs and drums, but does not include frame bracket kits, air kits, wheels, or tires. The envelope is the measurement from the center of the spindle to the front edge of the front frame bracket with the suspension at the middle of the ride height.

PRODUCT CODES

	20K NON-STEER INTEGRATED AIR
STRAIGHT AXLE - STANDARD STUD LENGTH	8A000902
STRAIGHT AXLE - LONG STUD LENGTH	8A000903
6" DROP CENTER AXLE - STANDARD STUD LENGTH	8A000906
6" DROP CENTER AXLE - LONG STUD LENGTH	8A000907
6" DROP CENTER AXLE - LONG STUD LENGTH (WITH AIR TANK)	8A001002
9" DROP CENTER AXLE - STANDARD STUD LENGTH	8A000910
9" DROP CENTER AXLE - LONG STUD LENGTH	8A000911

Specialty
Engineered
Suspensions