

Cabmate[®]
Cab Suspension

LINK[®]

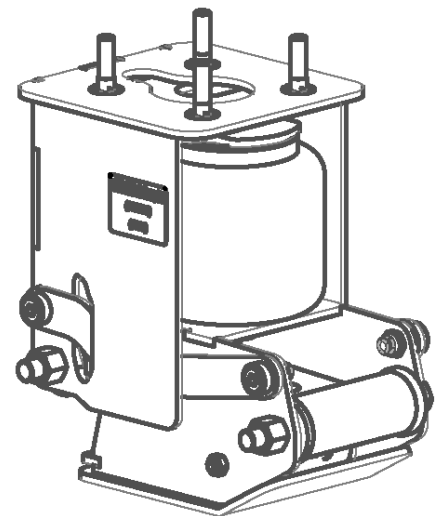
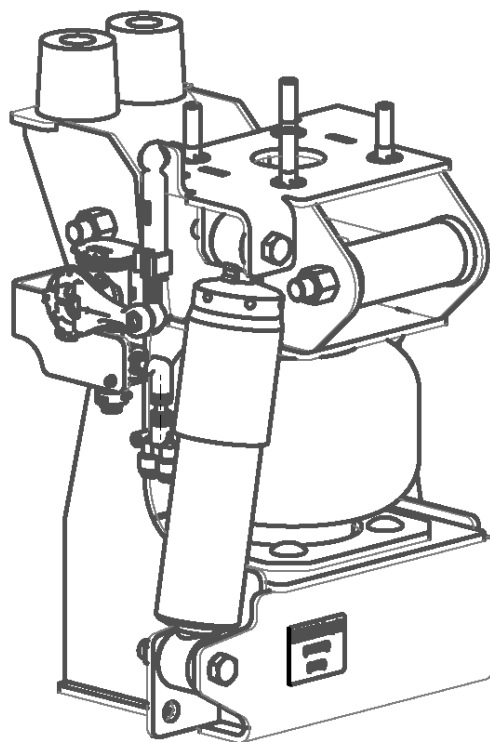
Link Mfg. Ltd.
223 15th St. N.E.
Sioux Center, IA USA
51250-2120
www.linkmfg.com

**QUESTIONS?
CALL CUSTOMER
SERVICE
1-800-222-6283**

OWNER'S GUIDE

Autocar Cab Suspension

ACTT



1. PLUMBING INSTRUCTIONS

WARNING: FOR SAFETY PURPOSES THE CABMATE MUST BE SUPPLIED FROM A PRESSURE PROTECTED CIRCUIT. IN THE EVENT OF AN AIR LEAK IN THE CAB SUSPENSION, FAILURE TO PROVIDE A PRESSURE PROTECTED CIRCUIT MAY CAUSE LOSS OF AIR PRESSURE TO VITAL SYSTEMS ON THE VEHICLE.

WARNING: LOSS OR APPLICATION OF AIR PRESSURE TO CABMATE WILL CAUSE SUDDEN MOVEMENT OF THE CAB. PRIOR TO INSTALLING OR PERFORMING MAINTENANCE, BLOCK UP THE CABMATE TO PREVENT THE POSSIBILITY OF INJURY.

WARNING: CONNECT THE CABMATE DIRECTLY TO THE MAIN AIR TANK. YOU WILL NEED AN AIR PRESSURE PROTECTION VALVE IN THE LINE. (INCLUDED IN THE PRESSUREPROTECTION KIT. LINK MFG. PART NO. 13500000). DO NOT USE AN AIR PRESSURE REGULATOR!

A. With the tank at 0 p.s.i., remove the existing plug or fitting from the desired port.

B. Apply joint compound to the fittings and install the pressure protection kit. **DO NOT USE TEFLON TAPE.** Be sure that the arrows on the valve are pointing in the direction of air flow and the vent hole is pointed down. **NOTE:** Additional fittings/reducers may be required to attach the hex nipple to the main air tank.

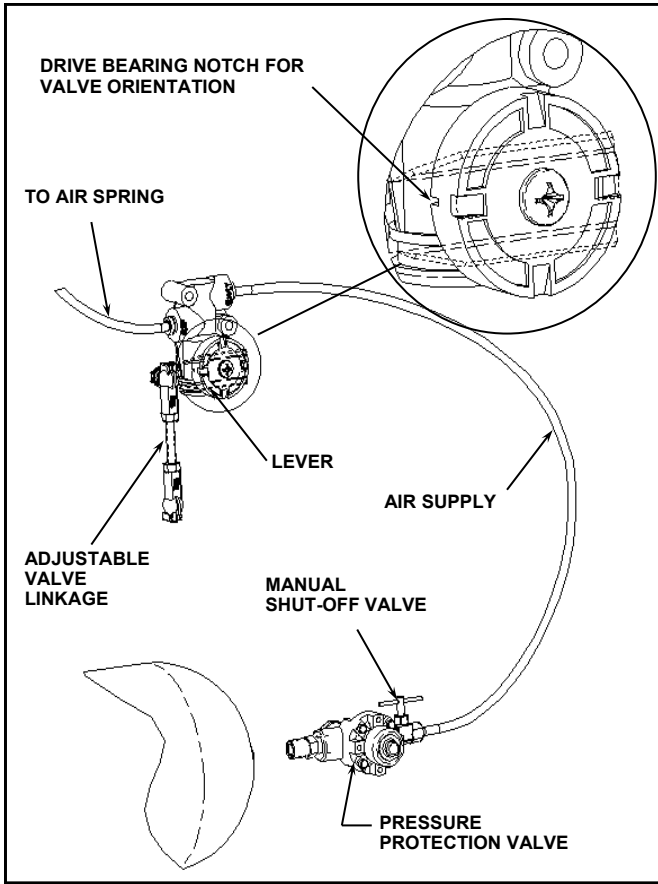
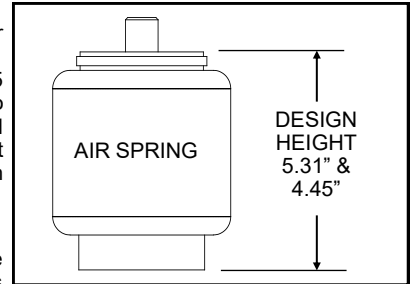
C. Run the 1/4" airline from the shut-off valve to the CABMATE. Be sure that the airline has enough clearance so that there are no pinch points that may restrict or cut the airline. Secure the airline using the cable ties supplied by Link Mfg.

D. Tighten all plumbing fittings. Then, with the system at operating pressure (90 to 110 p.s.i.), open the Manual Shut-off Valve to supply air to the CABMATE. Check the system for air leaks.

E. Check for proper operation of the height control valve. Disconnect the valve linkage from the lever. Push the lever down 45°, air should flow into the air spring (s). Return the lever to the neutral position. Push the lever up 45°, air should exhaust from the air spring(s). Return the lever to the neutral position; no air should flow. Reconnect the valve linkage to the lever.

HEIGHT ADJUSTMENTS

Measure the design height of the air spring(s). The height should be 5.31 inches for the left hand spring and 4.45 inches for the right hand spring. To change the height, disconnect one end of the valve linkage and adjust accordingly. Tighten the lock nuts on the valve linkage.



MAINTENANCE

CABMATES need no lubrication and little maintenance. The following components should be checked at the time the truck is being serviced. However, immediate corrective action should be taken if a serious malfunction occurs.

COMPONENT	POSSIBLE PROBLEM	CORRECTIVE ACTION
Airlines	Air leaks	Replace airline
Fittings	Air leaks	Replace fittings.
Air Springs	A. Improper height B. Air leakage	A. Adjust valve linkage to maintain proper air spring height. B. Replace air spring.
Height Control Valve	Air spring(s) will not inflate when weight is added to the cab; OR Air spring(s) will not deflate when weight is removed from the cab.	A. Inspect valve to insure drive bearing notch is located on "SUSP" port side of valve. If not, loosen lever screw (but do not remove completely) and pull lever loose from drive bearing, rotate drive bearing until the bearing notch is in the correct position and resecure lever by tightening lever screw. B. Replace Valve
Shock Absorber	Insufficient dampening effect	Replace shocks
Hinge Arm	A. Loose nuts on hinge arm B. Worn bushings.	A. Tighten securely to clamp the inner sleeve. B. Replace lateral control rod.

IMPORTANT: Periodically check the tightness of all fasteners.

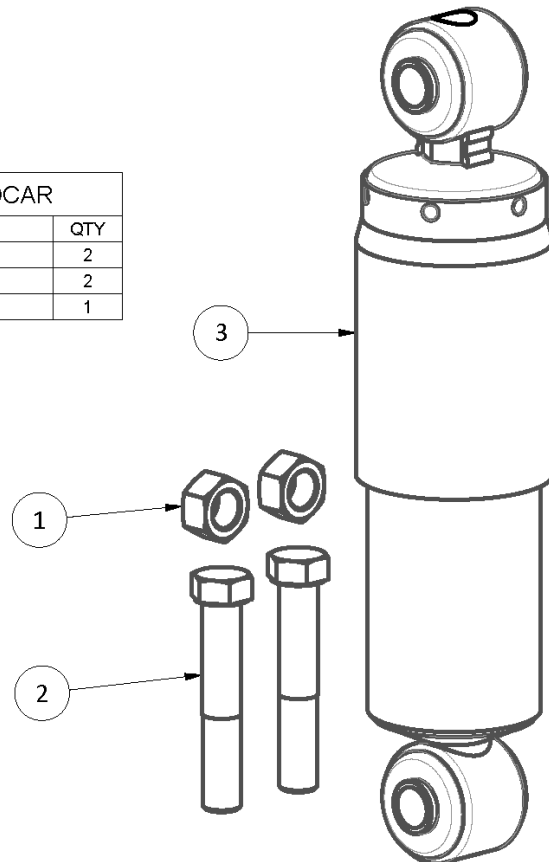
2. **WARRANTY** - Refer to our warranty for Link Cabmate Suspensions by going to our website at www.linkmfg.com

3. **SERVICE PARTS AND SERVICE KITS:** 27562000 (A6620119-001)
 27562001 (A6620120-001)
 27562024 (A6620128-001)

SERVICE ITEMS FOR AUTOCAR CAB SUSPENSION

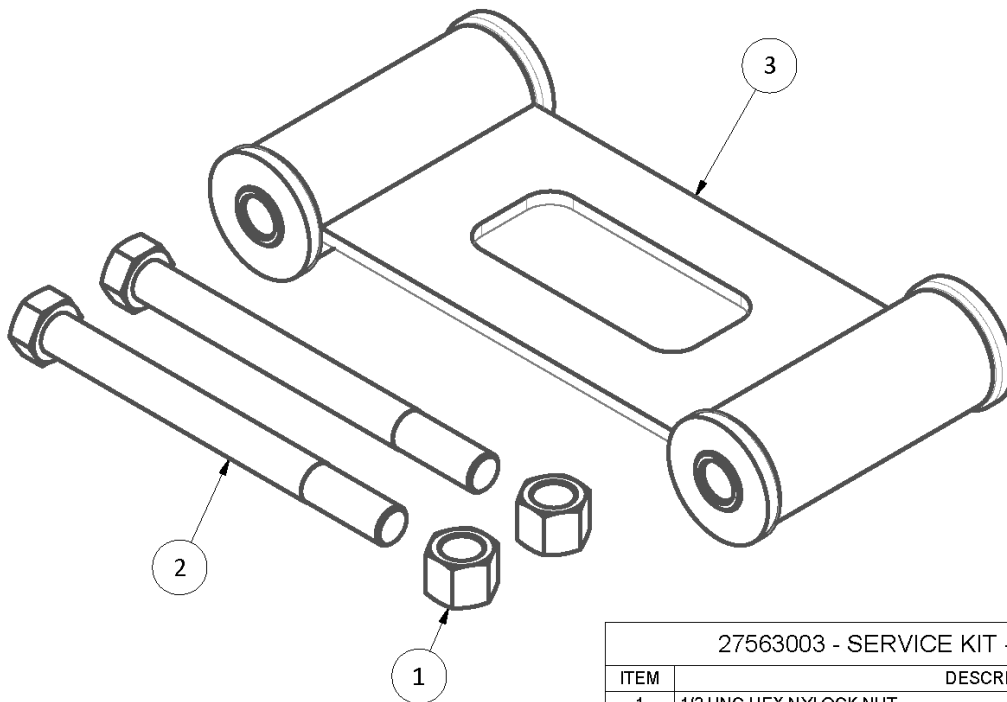
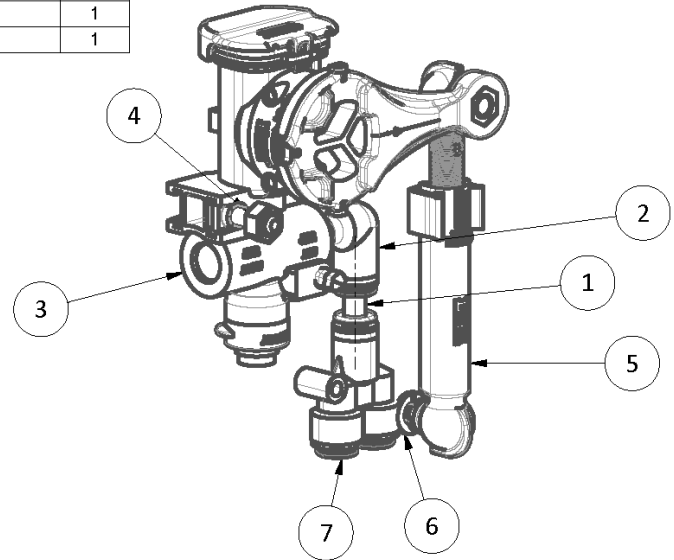
ITEM NUMBER	DESCRIPTION
27563001	SERVICE KIT - SHOCK ABSORBER, AUTOCAR
27563002	SERVICE KIT - HEIGHT CONTROL KIT, AUTOCAR
27563003	SERVICE KIT - HINGE ARM, AUTOCAR
27563004	SERVICE KIT - LEFT SIDE LOWER BRACKET, AUTOCAR
27563005	SERVICE KIT - LEFT SIDE UPPER BRACKET, AUTOCAR
27563006	SERVICE KIT - RIGHT SIDE LOWER BRACKET, AUTOCAR
27563007	SERVICE KIT - RIGHT SIDE UPPER BRACKET, AUTOCAR
27563008	SERVICE KIT - HINGE ARM, RIGHT HAND, AUTOCAR
27563009	SERVICE KIT - LEFT SIDE AIRSPRING, AUTOCAR
27563010	SERVICE KIT - RIGHT SIDE AIRSPRING, AUTOCAR
15000070	BUMPER - JOUNCE, 1.75
29910026	SERVICE KIT - PIVOT BALL
29910051	SERVICE KIT - LINKAGE, MEDIUM

27563001 - SERVICE KIT - SHOCK ABSORBER, AUTOCAR		
ITEM	DESCRIPTION	QTY
1	7/16 UNF HEX TOP LOCK NUT (GR B)	2
2	7/16 X 2 1/2 UNF HEX CAP SCR (GR 5)	2
3	SHOCK ABSORBER	1



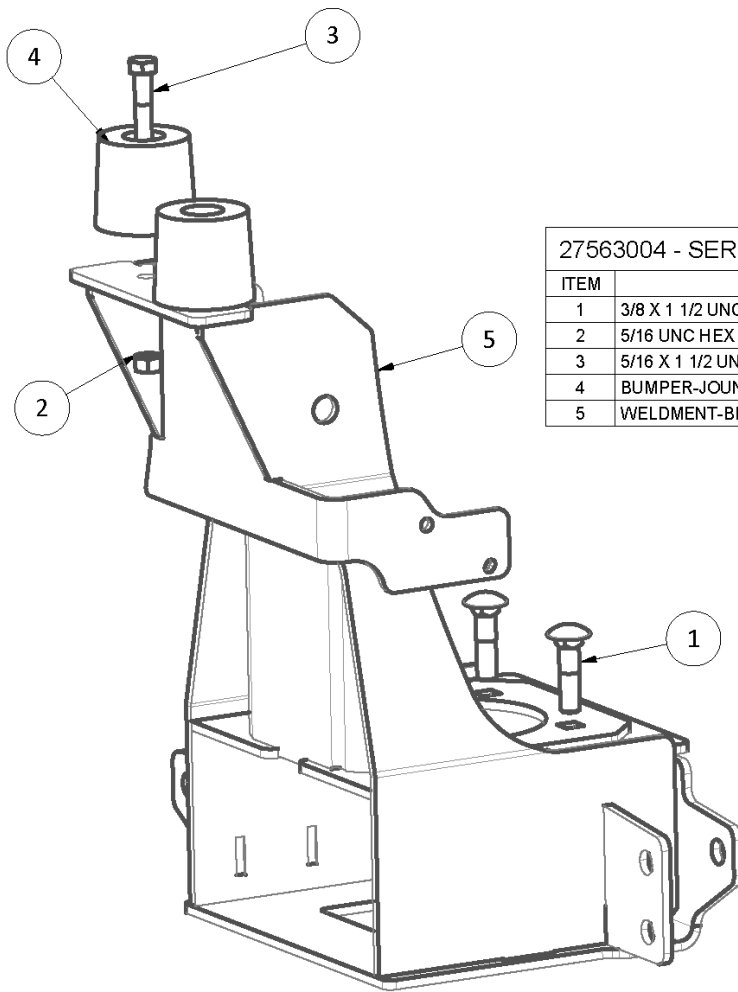
27563002 - SERVICE KIT - HEIGHT CONTROL KIT, AUTOCAR

ITEM	DESCRIPTION	QTY
1	AIRLINE-NYLON, .250 O.D., BULK (FEET)	0.100
2	ELBOW-PLUG-IN, 1/4"	1
3	HEIGHT CONTROL VALVE	1
4	HEX TOP LOCK NUT, M6 X 1, CLASS 8	1
5	SERVICE KIT-LINKAGE, MEDIUM	1
6	SERVICE KIT-PIVOT BALL	1
7	UNION Y, 1/4 TB	1



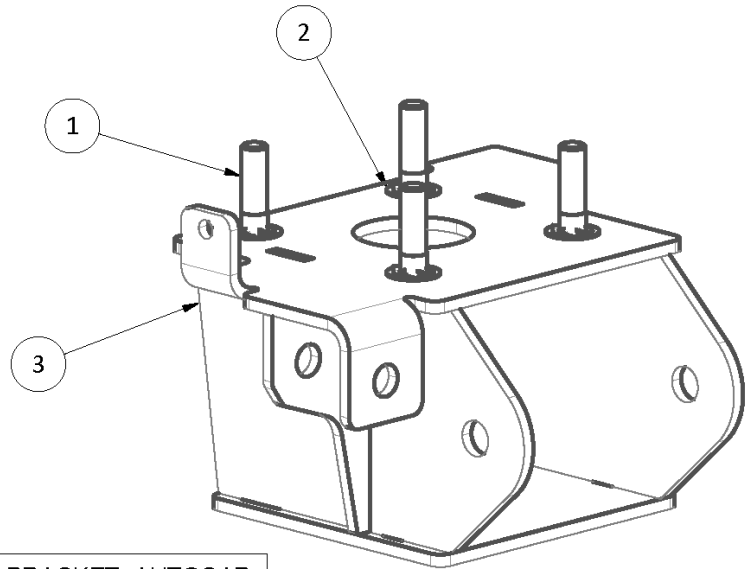
27563003 - SERVICE KIT - HINGE ARM, AUTOCAR

ITEM	DESCRIPTION	QTY
1	1/2 UNC HEX NYLOCK NUT	2
2	1/2 X 5 1/2 UNC HEX CAP SCR (GR 8)	2
3	HINGE ARM, 7.50	1



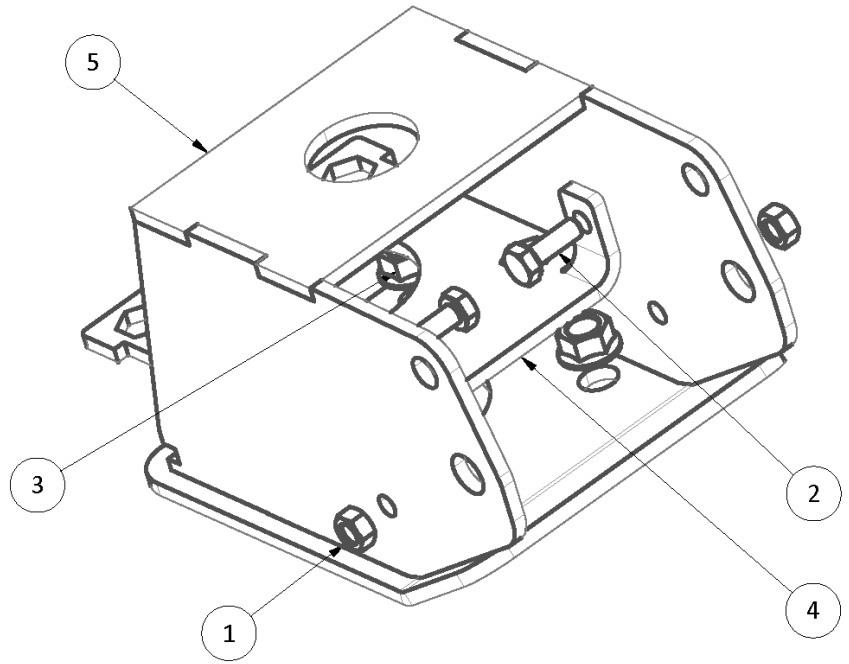
27563004 - SERVICE KIT - LEFT SIDE LOWER BRACKET, AUTOCAR

ITEM	DESCRIPTION	QTY
1	3/8 X 1 1/2 UNC RND HD SQ NK BOLT (GRADE 5)	4
2	5/16 UNC HEX CTR LOCK NUT (GR B)	2
3	5/16 X 1 1/2 UNC HEX CAP SCR (GR 5)	2
4	BUMPER-JOUNCE, 1.75	2
5	WELDMENT-BRACKET, FRAME	1



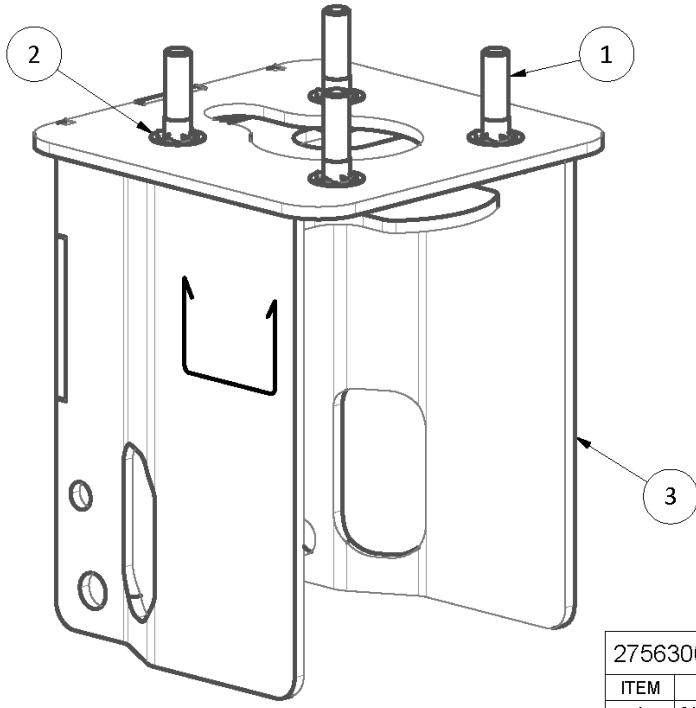
27563005 - SERVICE KIT - LEFT SIDE UPPER BRACKET, AUTOCAR

ITEM	DESCRIPTION	QTY
1	3/8 X 1 1/2 UNC HEX CAP SCR (GR 5)	4
2	PUSH NUT - 3/8	4
3	WELDMENT-BRACKET, LATCH	1



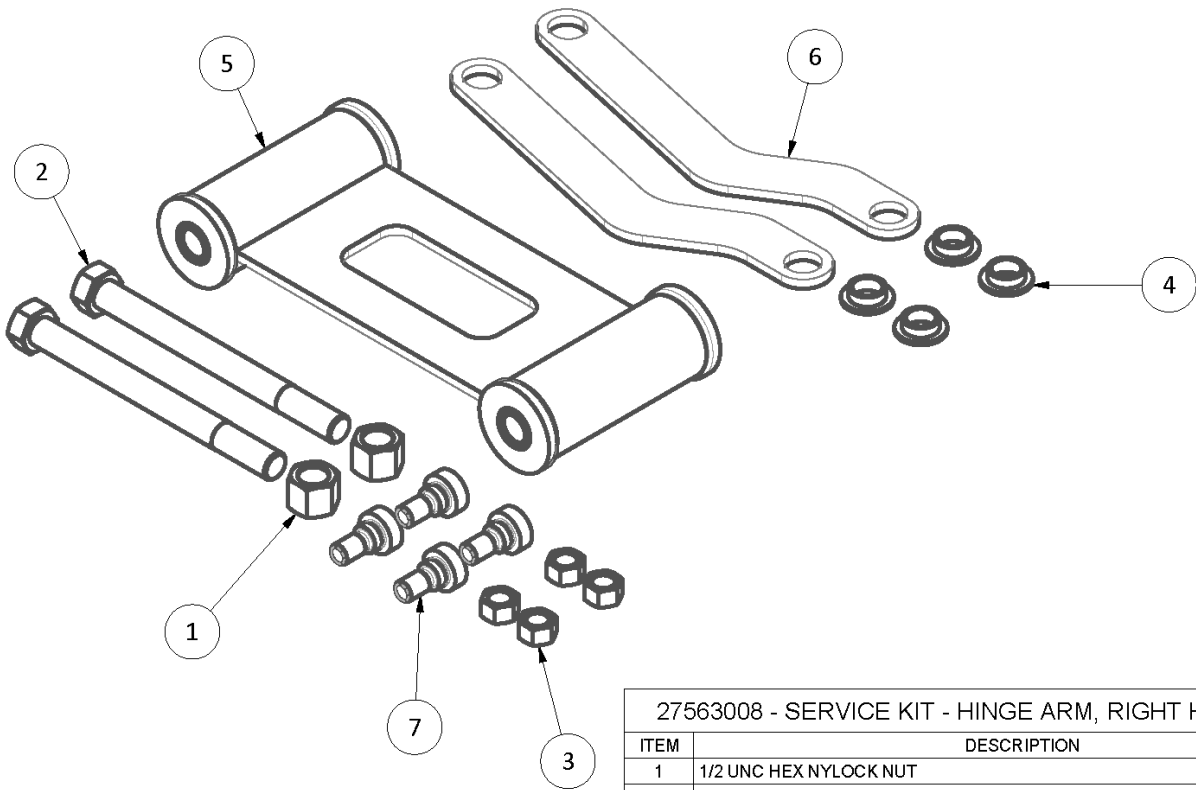
27563006 - SERVICE KIT - RIGHT SIDE LOWER BRACKET, AUTOCAR

ITEM	DESCRIPTION	QTY
1	1/4 UNC HEX CTR LOCK NUT (GR B)	2
2	1/4 X 3/4 UNC HEX CAP SCR (GR 5)	2
3	3/8 UNC TOP LOCK FL NUT (GR F)	4
4	PLATE-NUT CAPTURE, AUTOCAR	1
5	WELDMENT-BRACKET, BASE	1



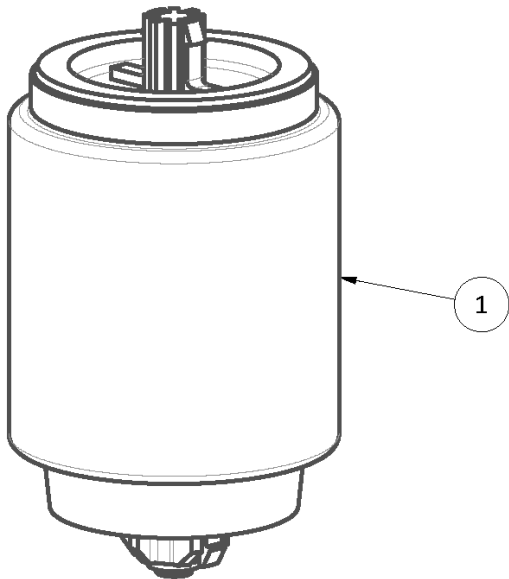
27563007 - SERVICE KIT - RIGHT SIDE UPPER BRACKET, AUTOCAR

ITEM	DESCRIPTION	QTY
1	3/8 X 1 1/2 UNC HEX CAP SCR (GR 5)	4
2	PUSH NUT - 3/8	4
3	WELDMENT-BRACKET, LATCH	1



27563008 - SERVICE KIT - HINGE ARM, RIGHT HAND, AUTOCAR

ITEM	DESCRIPTION	QTY
1	1/2 UNC HEX NYLOCK NUT	2
2	1/2 X 5 1/2 UNC HEX CAP SCR (GR 8)	2
3	3/8 UNC HEX CENTER LOCK NUT (GR B)	4
4	BUSHING-PIVOT, NYLON, 0.25 X 0.50	4
5	HINGE ARM, 7.50	1
6	LINK-PARALLEL	2
7	SHSCS-500X0.250	4

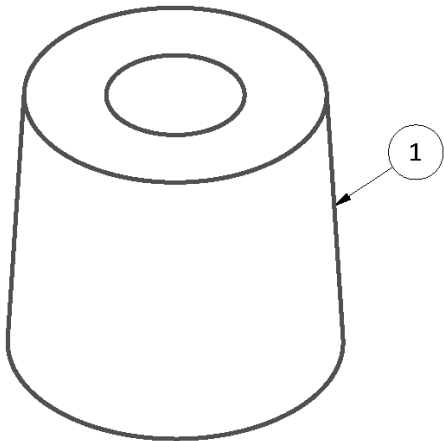
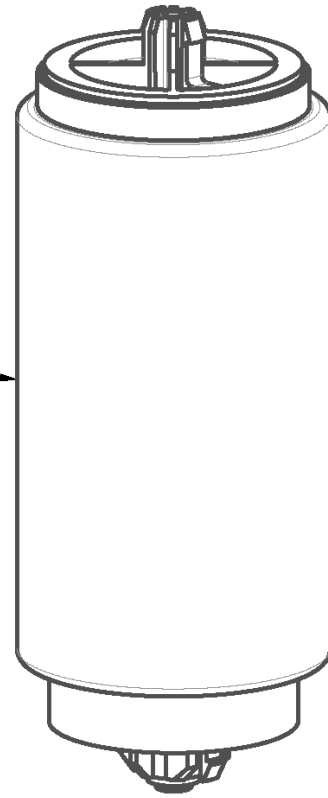


27563009 - SERVICE KIT - LEFT SIDE AIRSPRING, AUTOCAR

ITEM	DESCRIPTION	QTY
1	SPRING-AIR	1

27563010 - SERVICE KIT - RIGHT SIDE AIRSPRING, AUTOCAR

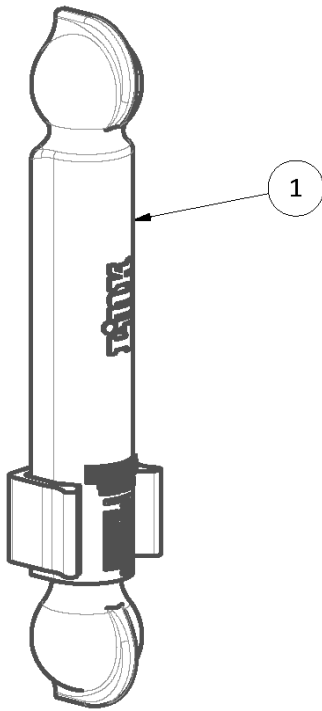
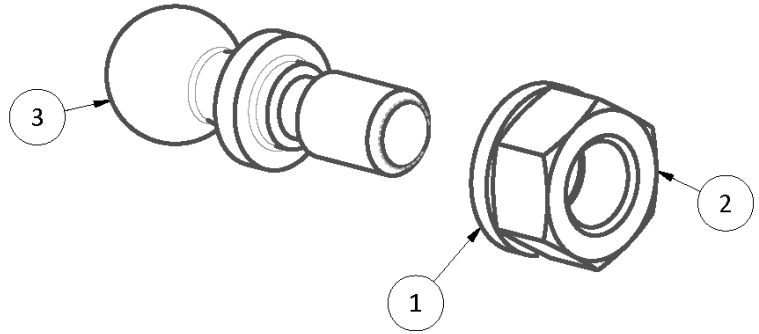
ITEM	DESCRIPTION	QTY
1	AIR SPRING	1



15000070 - BUMPER-JOUNCE, 1.75

ITEM	DESCRIPTION	QTY
1	BUMPER-JOUNCE, 1.75	1

29910026 - SERVICE KIT-PIVOT BALL		
ITEM	DESCRIPTION	QTY
1	1/4 LOCK WASHER	1
2	1/4 UNC HEX NUT	1
3	BALL-PIVOT, THREADED	1



29910051 - SERVICE KIT-LINKAGE, MEDIUM		
ITEM	DESCRIPTION	QTY
1	LINKAGE-VALVE	1



LINK MANUFACTURING, LTD.
223 15TH ST. NE, SIOUX CENTER, IA 51250
1-800-222-6283 www.linkmfg.com