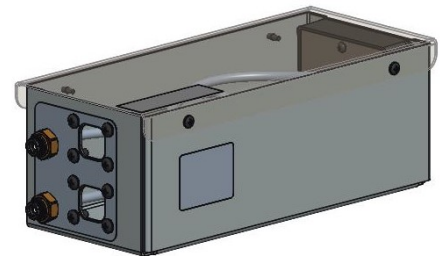
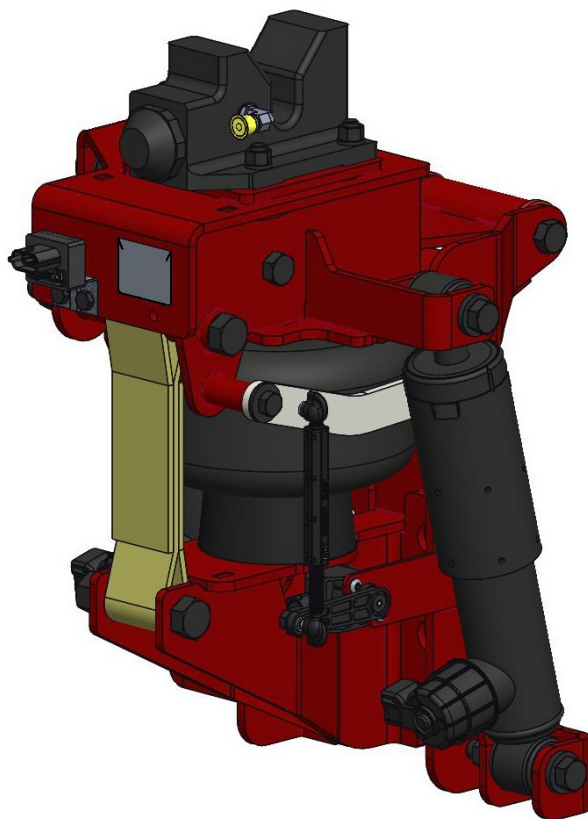


LINK® | **ROI Cabmate**®
Cab Suspension

OWNER'S GUIDE

Cab Suspension ORANGE EV

LINK PART NO.
26302051



Link Mfg. Ltd.
223 15th St. N.E.
Sioux Center, IA USA
51250-2120
www.linkmfg.com

**QUESTIONS?
CALL CUSTOMER
SERVICE
1-800-222-6283**

26304080
OCT 25, 2023

1. PLUMBING INSTRUCTIONS

⚠WARNING FOR SAFETY PURPOSES THE ROI CABMATE MUST BE SUPPLIED FROM A PRESSURE PROTECTED CIRCUIT. IN THE EVENT OF AN AIR LEAK IN THE CAB SUSPENSION, FAILURE TO PROVIDE A PRESSURE PROTECTED CIRCUIT MAY CAUSE LOSS OF AIR PRESSURE TO VITAL SYSTEMS ON THE VEHICLE.

⚠WARNING CONNECT THE ROI CABMATE DIRECTLY TO THE MAIN AIR TANK. YOU WILL NEED AN AIR PRESSURE PROTECTION VALVE IN THE LINE. (INCLUDED IN THE PRESSURE PROTECTION KIT. LINK MFG. PART NO. 13500000). DO NOT USE AN AIR PRESSURE REGULATOR!

HEIGHT ADJUSTMENTS

Refer to installation instructions.

MAINTENANCE

The ROI Cabmate Suspension needs no lubrication and little maintenance. The following components should be checked at the time the truck is being serviced. However, immediate corrective action should be taken if a serious malfunction occurs.

COMPONENT	POSSIBLE PROBLEM	CORRECTIVE ACTION
Airlines	Air leaks	Replace airline
Fittings	Air leaks	Replace fittings.
Air Springs	A. Improper height B. Air leakage C. Air springs not filling	A. Adjust valve linkage to maintain proper air spring height. B. Replace air spring. C. See "Electronic Troubleshooting" Section.
Control Box	Air spring(s) will not inflate when weight is added to the cab; OR Air spring(s) will not deflate when weight is removed from the cab.	See "Electronic Troubleshooting" Section.
Shock Absorber	Improper damping effect	A. Inspect LED for fault codes. If present, repair per "Electronic Troubleshooting" section. B. If no faults are present, replace shocks.

⚠WARNING LOSS OF AIR PRESSURE TO THE ROI CABMATE SUSPENSION WILL CAUSE SUDDEN MOVEMENT OF THE CAB. PRIOR TO INSTALLING OR PERFORMING MAINTENANCE, BLOCK UP THE CABMATE TO PREVENT THE POSSIBILITY OF INJURY.

Prior to removing the control box for servicing, perform the following:

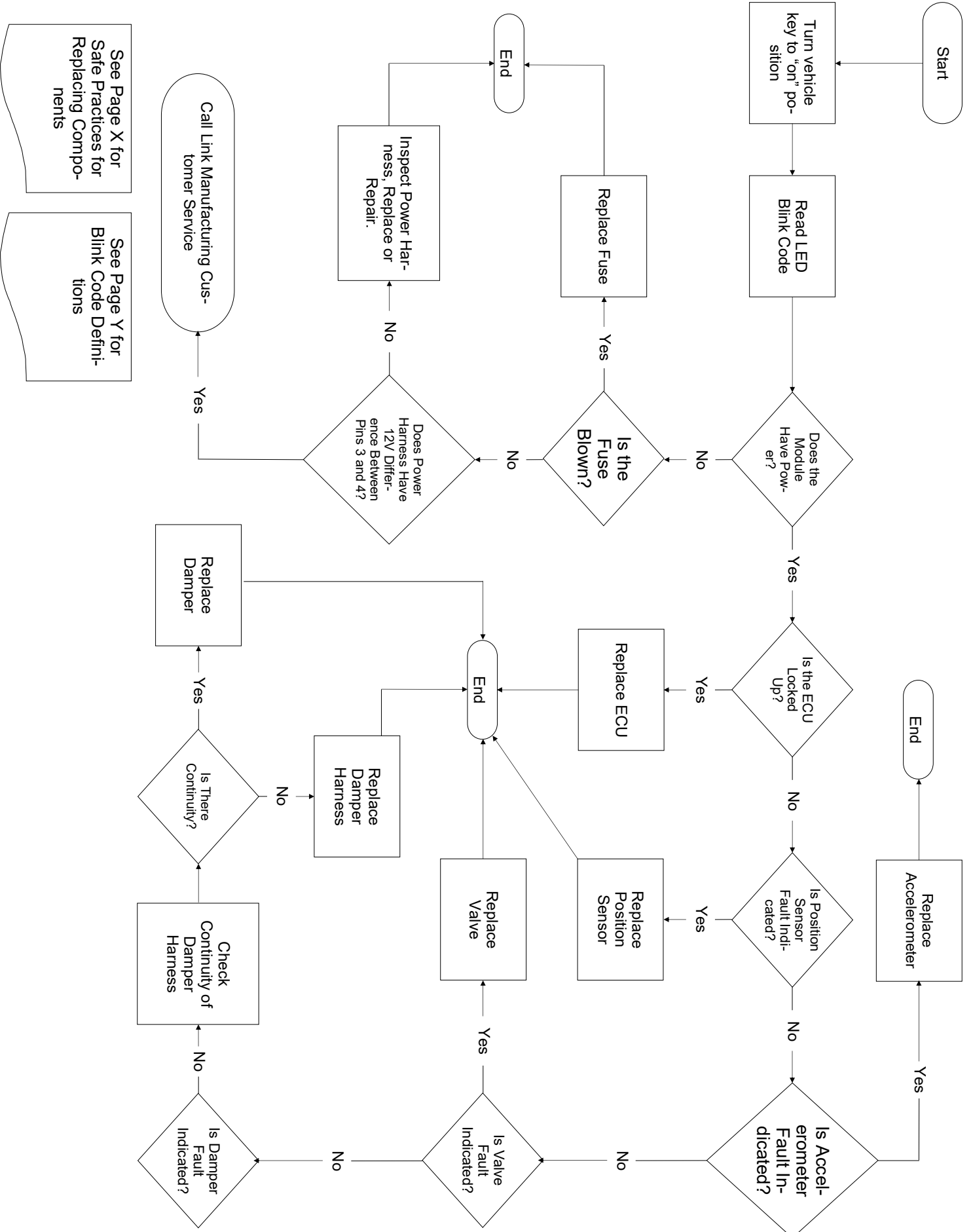
1. Unplug the power harness
2. Unplug the shock harness
3. Unplug the airlines from the control box
4. Disconnect the position sensor

2. TORQUE INSTRUCTIONS

IMPORTANT: Periodically check the tightness of all fasteners.

TORQUE TABLE		
COMPONENT	FASTENER	TORQUE
POSITION SENSOR	M5	26-44 IN-LBS
CONTROL BOX	1/4	48-60 IN-LBS
SHOCKS	1/2	60-70 FT-LBS

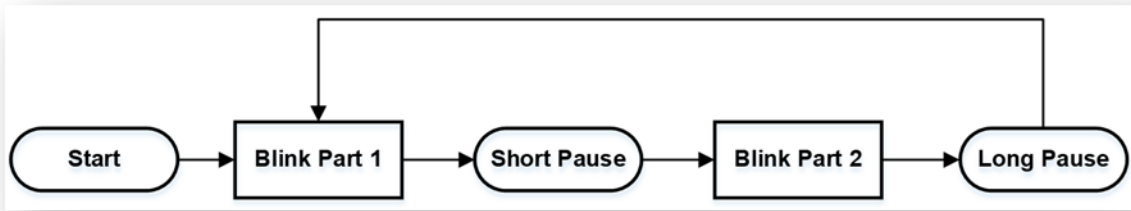
4. FAULT TROUBLESHOOTING FLOW CHART



See Page X for Safe Practices for Replacing Components

See Page Y for Blink Code Definitions

5. BLINK CODE FLOW CHART AND TABLE

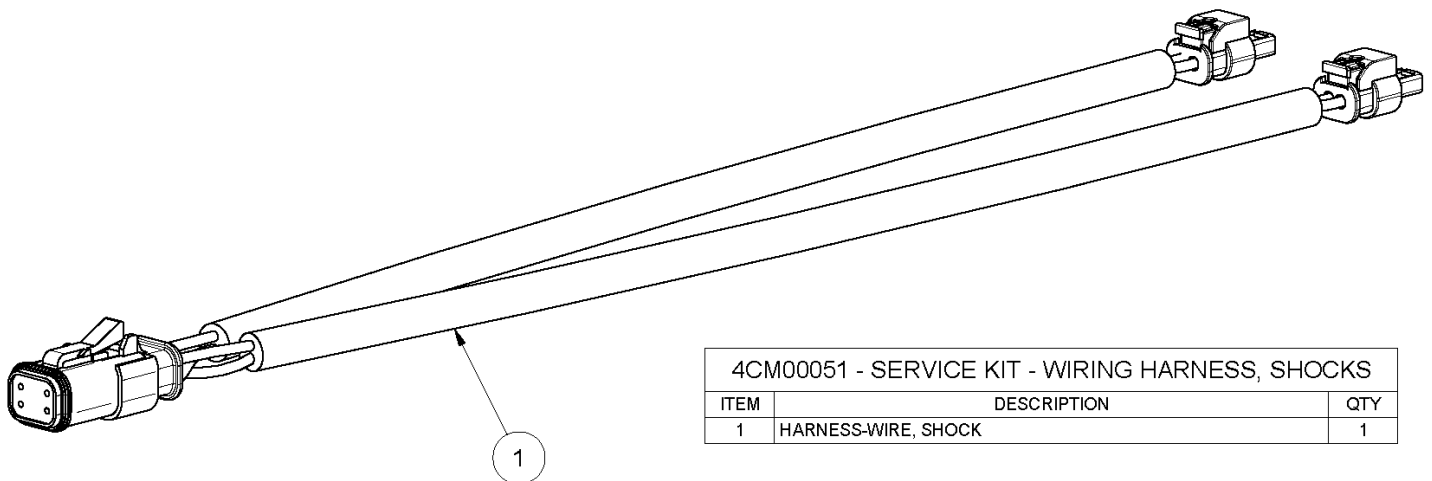


Blink Code		Fault Definition	
Blink Part 1	Blink Part 2	Component	Description
1	2	Position Sensor	Low Voltage
1	3	Position Sensor	High Voltage
5	1	Fill Valve	Open Circuit
5	2	Fill Valve	Short to Ground
5	3	Fill Valve	Short to Battery
5	4	Fill Valve	Over Current
6	1	Exhaust Valve	Open Circuit
6	2	Exhaust Valve	Short to Ground
6	3	Exhaust Valve	Short to Battery
6	4	Exhaust Valve	Over Current
2	3	Accelerometer	Low Voltage
2	4	Accelerometer	High Voltage
3	1	PS Damper	Open Circuit
3	2	PS Damper	Short to Ground
3	4	PS Damper	Short to Battery
3	5	PS Damper	Over Current
4	1	DS Damper	Open Circuit
4	2	DS Damper	Short to Ground
4	3	DS Damper	Short to Battery
4	5	DS Damper	Over Current
LED on, no blinking		ECU	Unknown Failure
Steady, slow blinking		No faults detected	

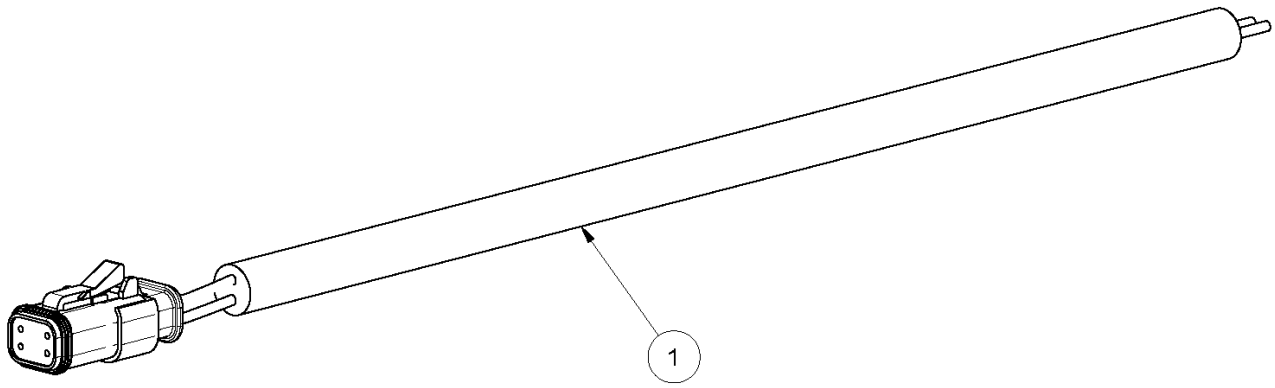
6. **WARRANTY** - Refer to www.ROIcabmate.com for warranty information and registration.

7. SERVICE KITS

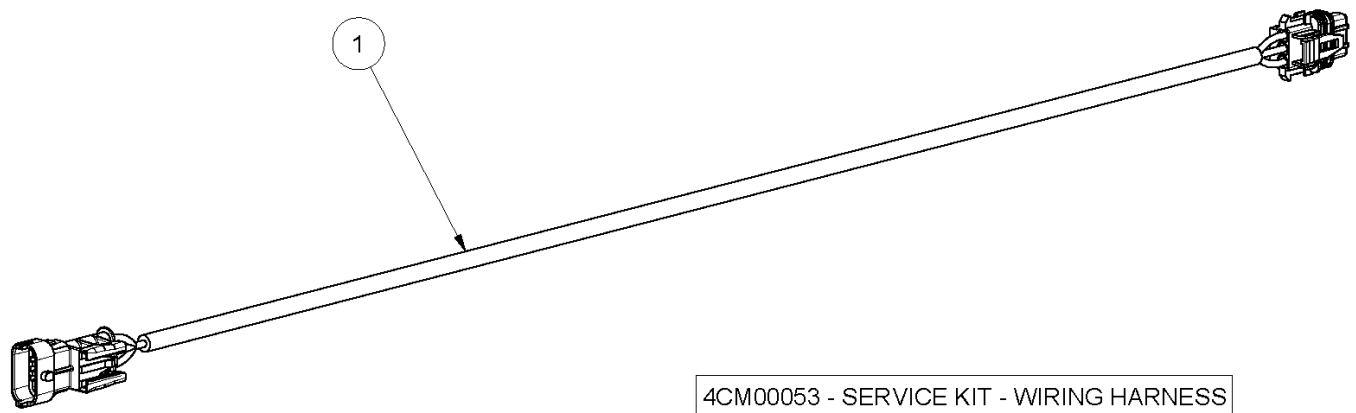
ROI CABMATE - LONESTAR SERIES	
ITEM NUMBER	DESCRIPTION
4CM00051	SERVICE KIT - WIRING HARNESS, SHOCKS
4CM00052	SERVICE KIT - WIRING HARNESS, POWER
4CM00053	SERVICE KIT - WIRING HARNESS
4CM00054	SERVICE KIT - WIRING HARNESS AND FASTENERS, CONTROL MODULE
4CM00055	SERVICE KIT - AIRLINES WITH VALVES AND FITTINGS
4CM00056	SERVICE KIT - POSITION SENSOR, PIVOT BALL AND FASTENERS
4CM00060	SERVICE KIT - ECU
4CM00106	SERVICE KIT - LINKAGE
4CM00110	SERVICE KIT - WIRING HARNESS, POSITION EXT.
4CM00221	SERVICE KIT - ACCELEROMETER
4CM00222	SERVICE KIT - AIR SPRING
4CM00223	SERVICE KIT - FRAME BRACKET
4CM00224	SERVICE KIT - BUMPER
4CM00225	SERVICE KIT - HINGE ARM
4CM00226	SERVICE KIT - LATCH
4CM00227	SERVICE KIT - LINKAGE CONTROL ARM
4CM00228	SERVICE KIT - ROI CONTROL MODULE
4CM00229	SERVICE KIT - SHOCK
4CM00230	SERVICE KIT - STRAP
4CM00231	SERVICE KIT - TOP BRACKET



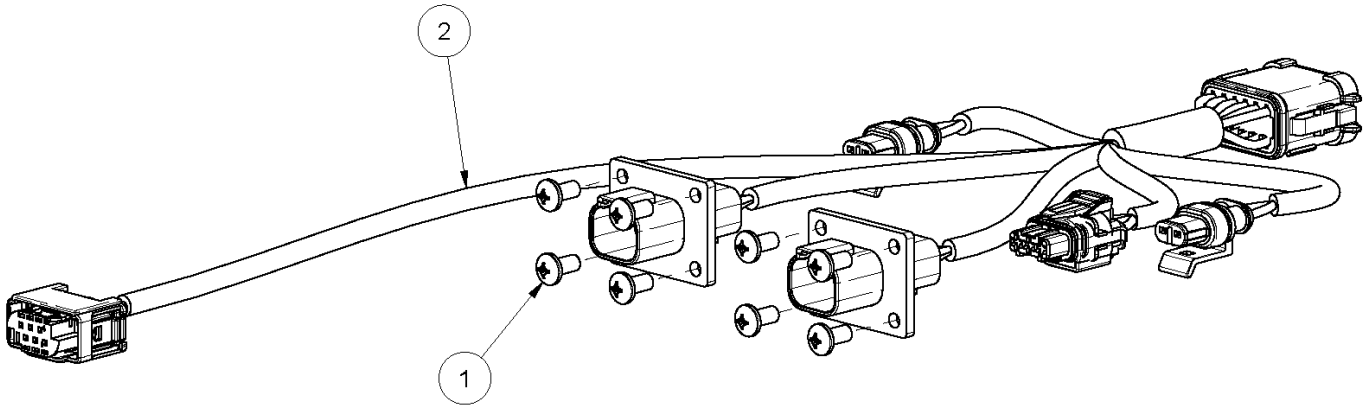
4CM00051 - SERVICE KIT - WIRING HARNESS, SHOCKS		
ITEM	DESCRIPTION	QTY
1	HARNESS-WIRE, SHOCK	1



4CM00052 - SERVICE KIT - WIRING HARNESS, POWER		
ITEM	DESCRIPTION	QTY
1	HARNESS-WIRE, POWER	1

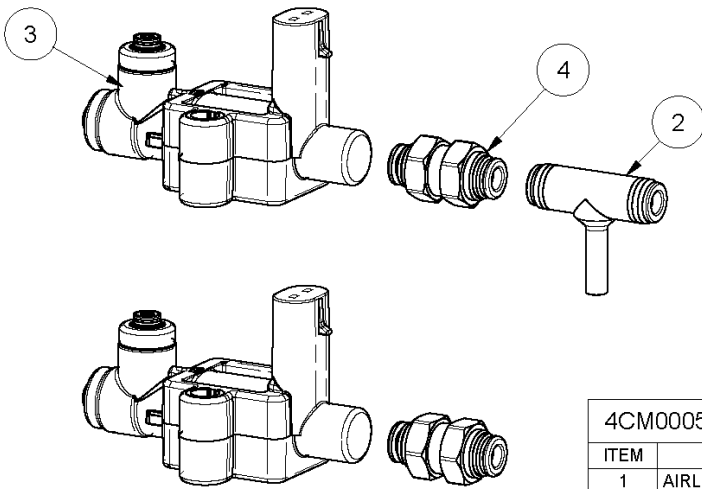


4CM00053 - SERVICE KIT - WIRING HARNESS		
ITEM	DESCRIPTION	QTY
1	HARNESS-EXT., ACCELEROMETER	1



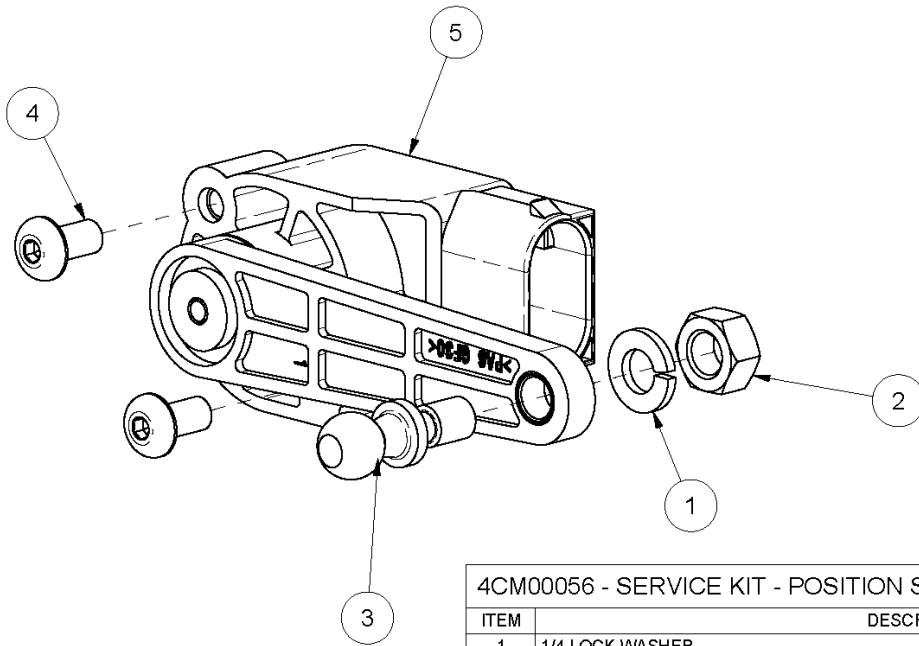
4CM00054 - SERVICE KIT - WIRING HARNESS AND FASTENERS, CONTROL MODULE

ITEM	DESCRIPTION	QTY
1	#10 X 3/8 THREAD CUTTING SCREW	8
2	HARNESS-WIRE, CONTROL BOX	1



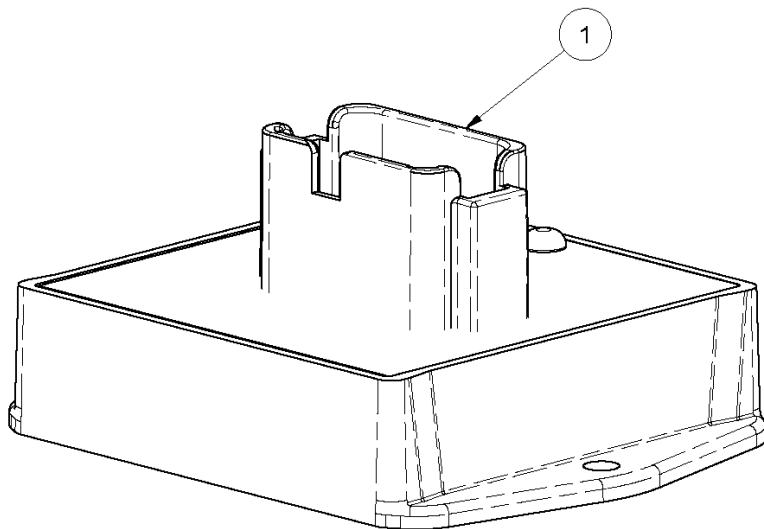
4CM00055 - SERVICE KIT - AIRLINES WITH VALVES AND FITTINGS

ITEM	DESCRIPTION	QTY
1	AIRLINE-NYLON, .250 O.D., BULK (FEET)	2
2	BRANCH TEE-PLUG-IN, 1/4"	1
3	SOLENOID-VALVE	2
4	UNION-BULKHEAD, 1/4" TB	2



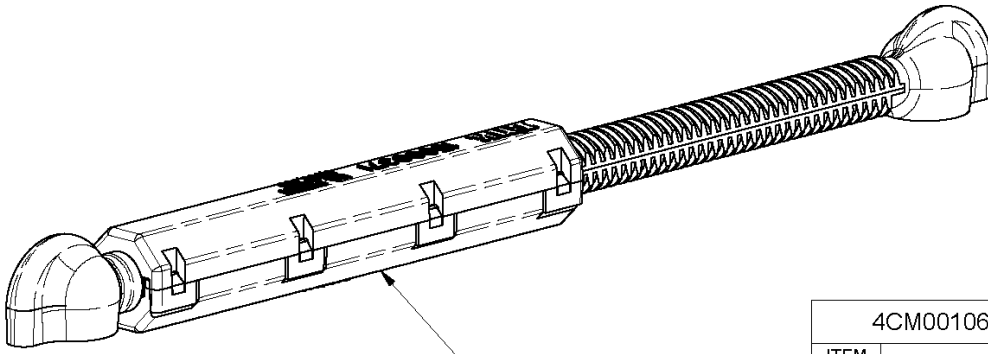
4CM00056 - SERVICE KIT - POSITION SENSOR, PIVOT BALL AND FASTENERS

ITEM	DESCRIPTION	QTY
1	1/4 LOCK WASHER	1
2	1/4 UNC HEX NUT	1
3	BALL-PIVOT, THREADED	1
4	M5X0.8X10 SOCKET BUTTON HD SS CAP SCREW	2
5	SENSOR-POSITION	1



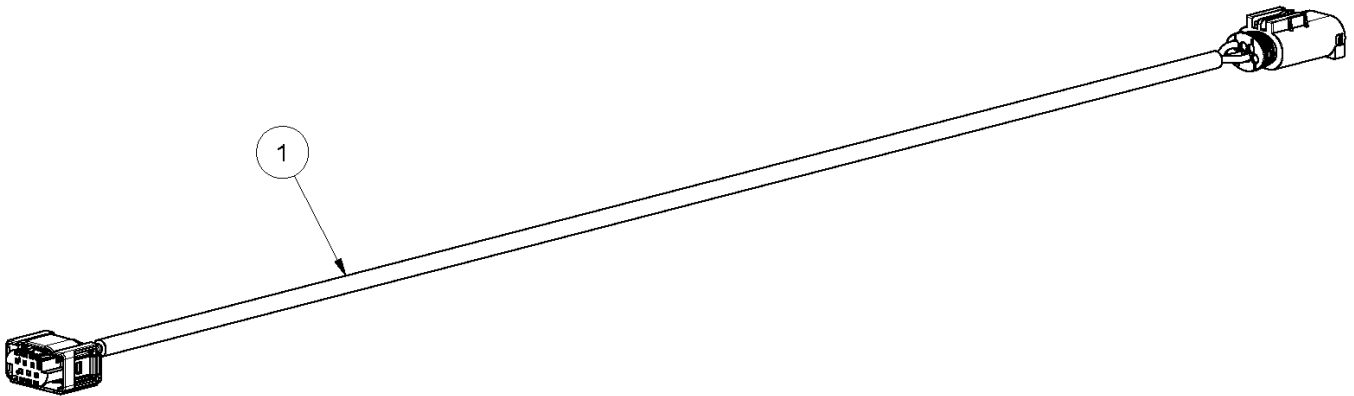
4CM00060 - SERVICE KIT - ECU

ITEM	DESCRIPTION	QTY
1	CONTROLLER, INTERNATIONAL LT SERIES	1



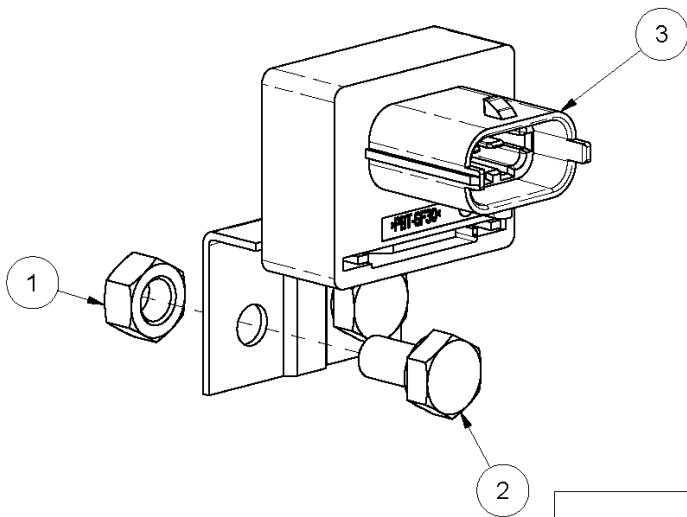
4CM00106 - SERVICE KIT - LINKAGE

ITEM	DESCRIPTION	QTY
1	LINKAGE-VALVE, MEDIUM	1

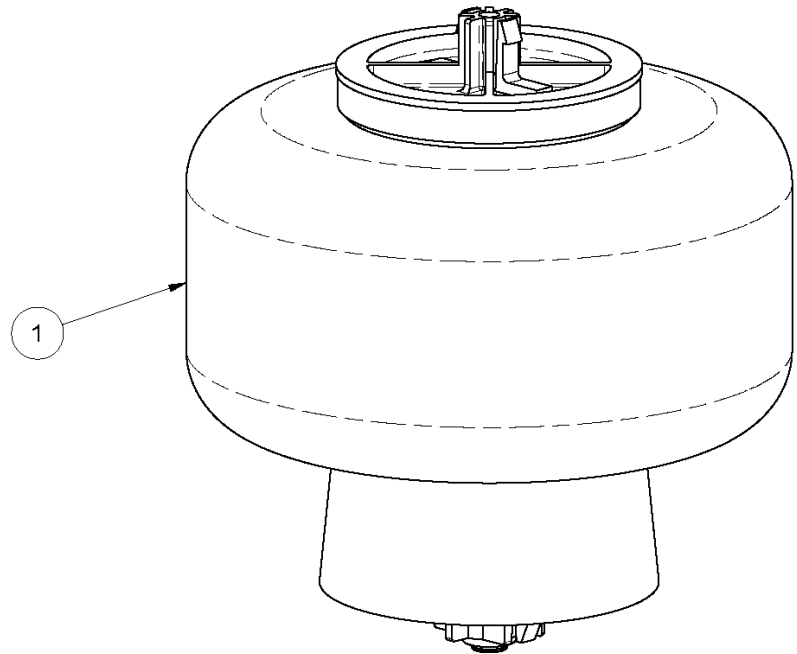


4CM00110 - SERVICE KIT - WIRING HARNESS, POSITION EXT.

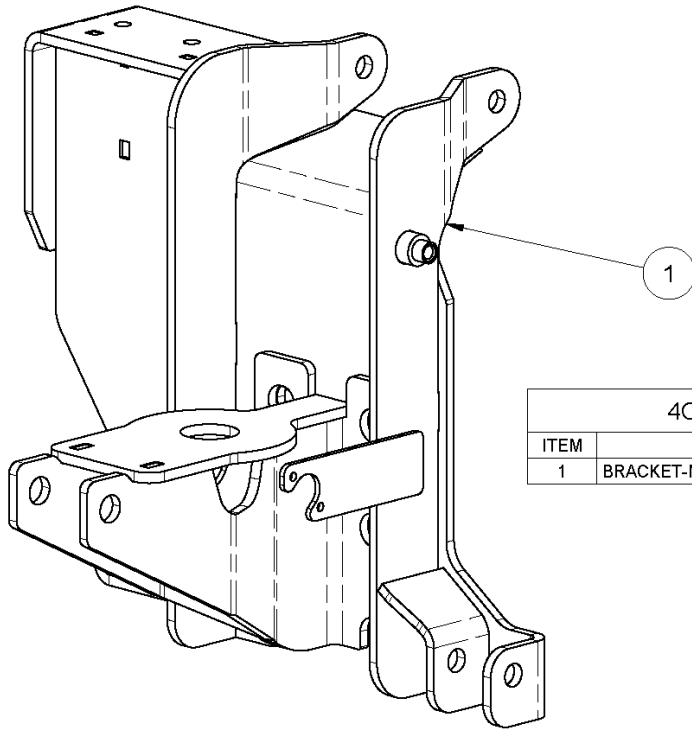
ITEM	DESCRIPTION	QTY
1	HARNESS-EXT., POSITION	1



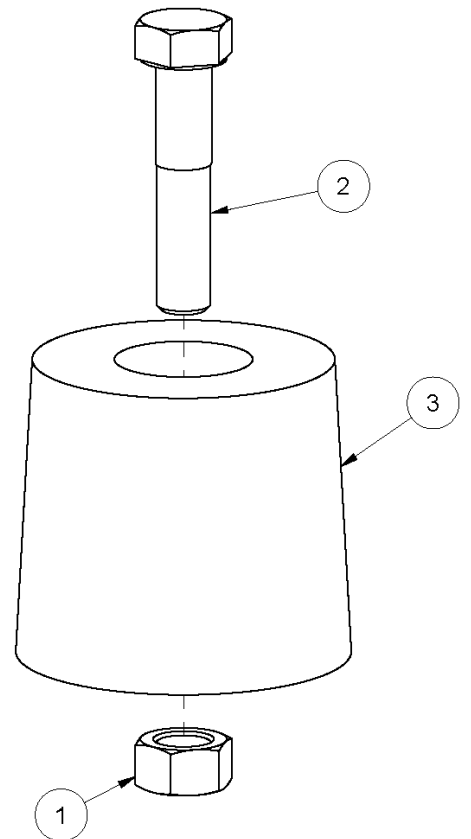
4CM00221 - SERVICE KIT - ACCELEROMETER		
ITEM	DESCRIPTION	QTY
1	1/4 UNC HEX CTR LOCK NUT (GR B)	2
2	1/4 X 1/2 UNC HEX CAP SCR (GR 5)	2
3	ZF ACCELEROMETER ASSEMBLY	1



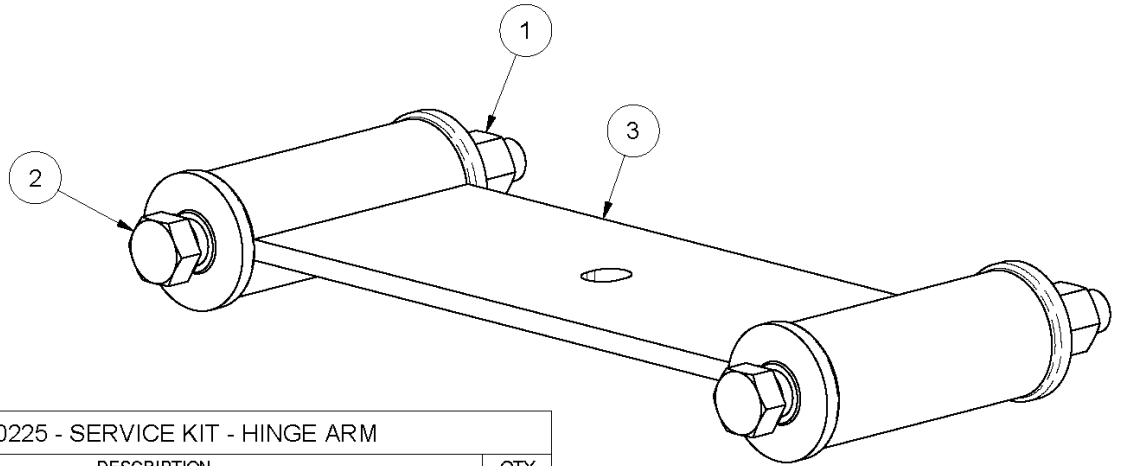
4CM00222 - SERVICE KIT - AIR SPRING		
ITEM	DESCRIPTION	QTY
1	SPRING-AIR	1



4CM00223 - SERVICE KIT - FRAME BRACKET		
ITEM	DESCRIPTION	QTY
1	BRACKET-MOUNT, FRAME	1

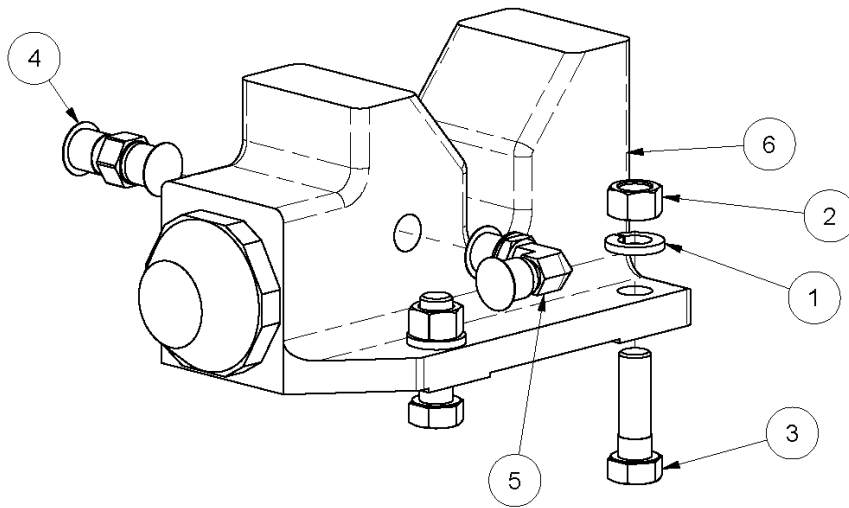


4CM00224 - SERVICE KIT - BUMPER		
ITEM	DESCRIPTION	QTY
1	5/16 UNC HEX CTR LOCK NUT (GR B)	1
2	5/16 X 1 1/2 UNC HEX CAP SCR (GR 5)	1
3	BUMPER-JOUNCE, 1.75	1



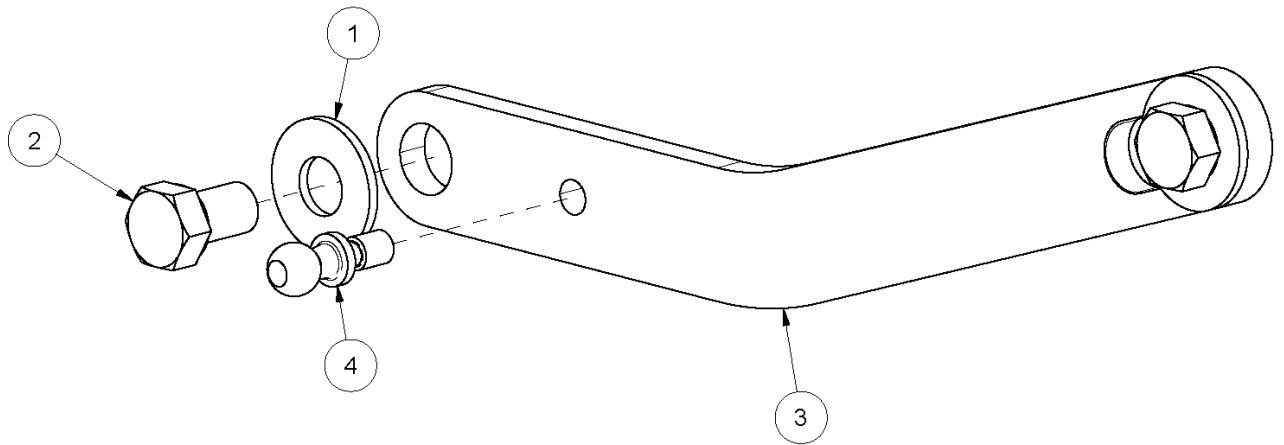
4CM00225 - SERVICE KIT - HINGE ARM

ITEM	DESCRIPTION	QTY
1	1/2 UNC HEX NYLOCK NUT	2
2	1/2 X 5 1/2 UNC HEX CAP SCR (GR 8)	2
3	HINGE ARM, TYPE A (9.56)	1

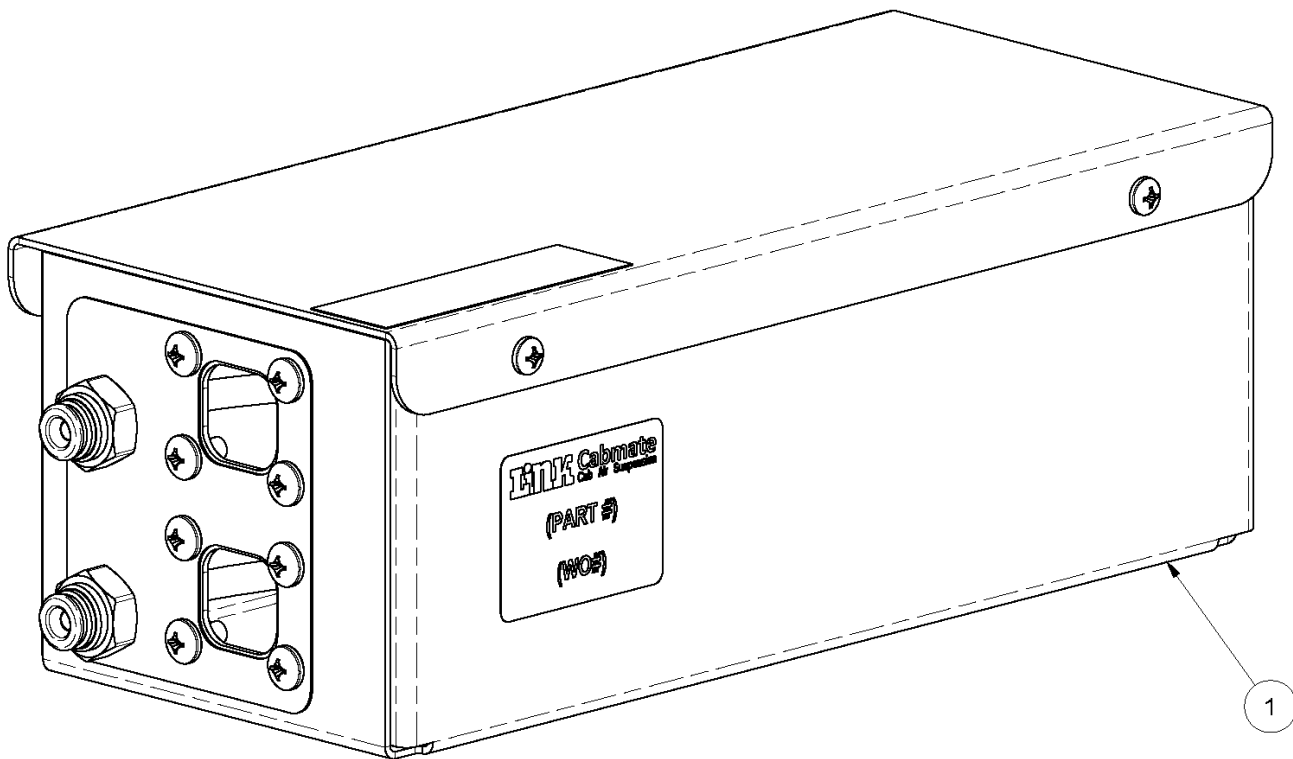


4CM00226 - SERVICE KIT - LATCH

ITEM	DESCRIPTION	QTY
1	3/8 LOCK WASHER	4
2	3/8 UNC HEX NUT	4
3	3/8 X 1 1/4 UNC HEX CAP SCR (GR 5)	4
4	CONNECTOR-MALE, #4 JIC TO #4 O-RING	1
5	ELBOW, STRAIGHT THREAD, 90 DEGREES, 1/4, 7/16-20	1
6	LATCH	1



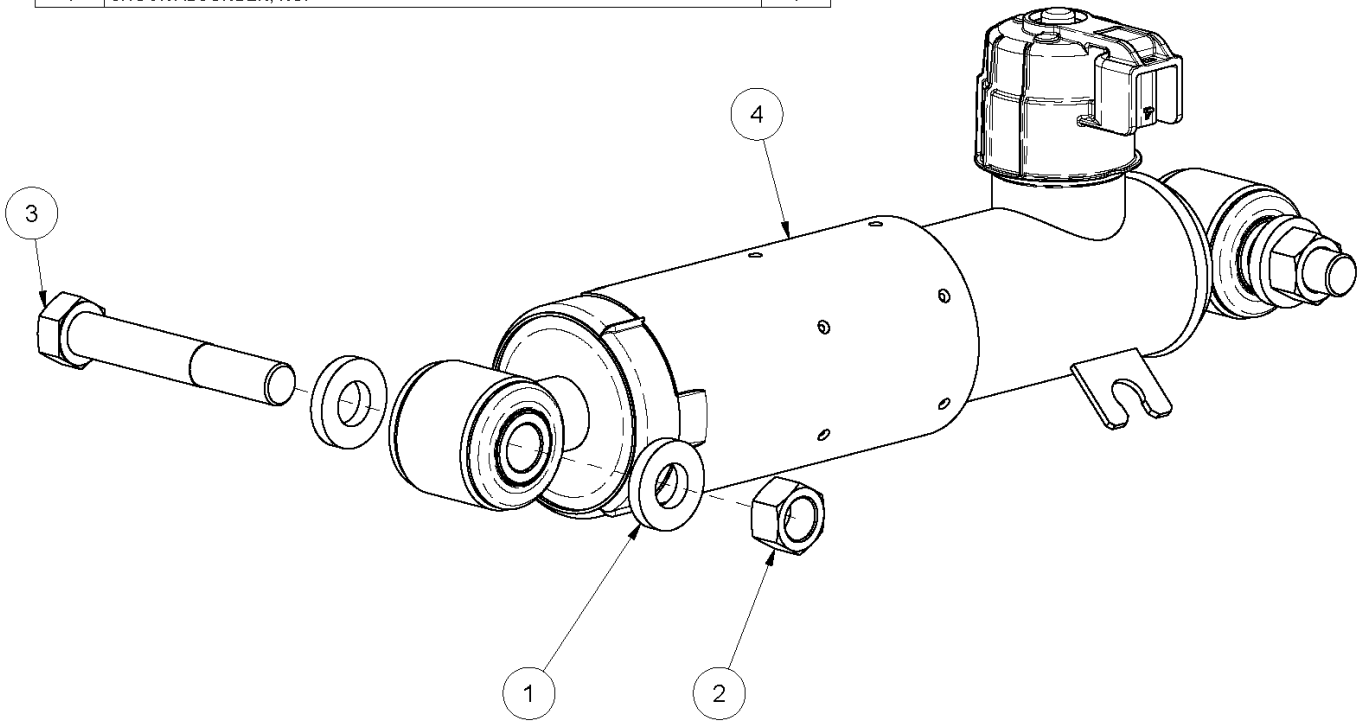
4CM00227 - SERVICE KIT - LINKAGE CONTROL ARM		
ITEM	DESCRIPTION	QTY
1	3/8 TYPE A PLAIN WASHER	2
2	3/8 X 5/8 UNC HEX CAP SCR (GR 5)	2
3	LINKAGE-CONTROL	1
4	SERVICE KIT-PIVOT BALL	1



4CM00228 - SERVICE KIT - ROI CONTROL MODULE		
ITEM	DESCRIPTION	QTY
1	BOX, CONTROL, ORANGE EV	1

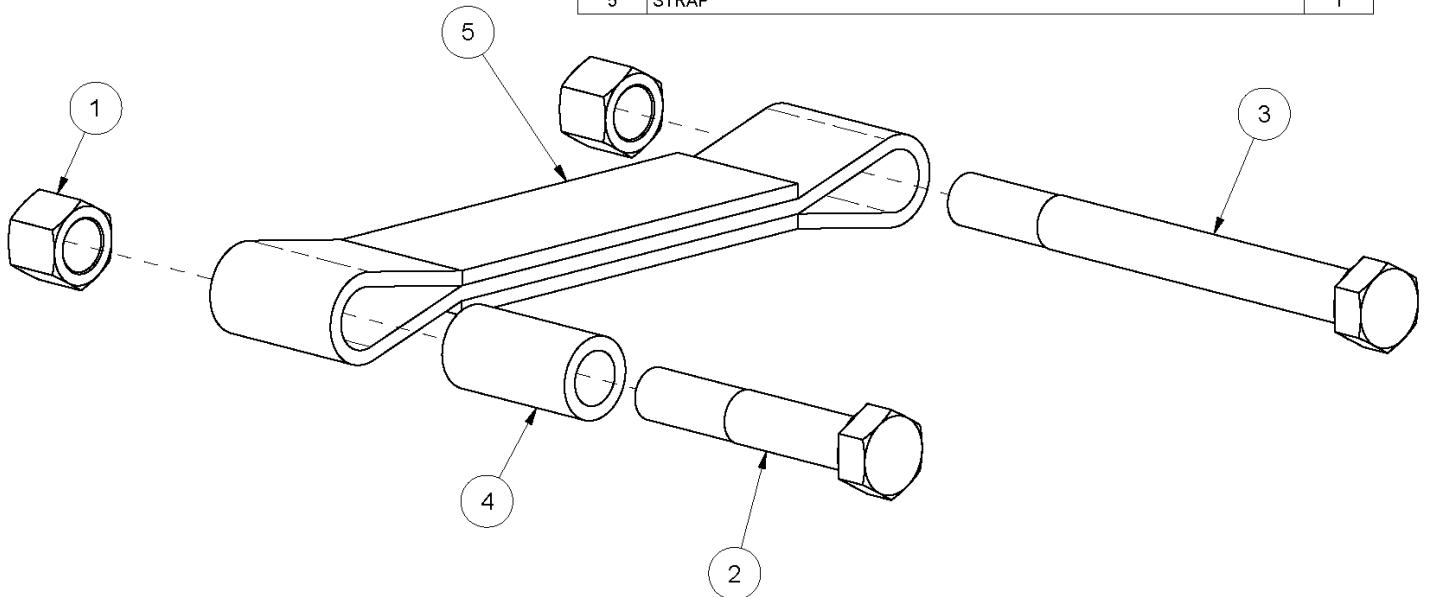
4CM00229 - SERVICE KIT - SHOCK

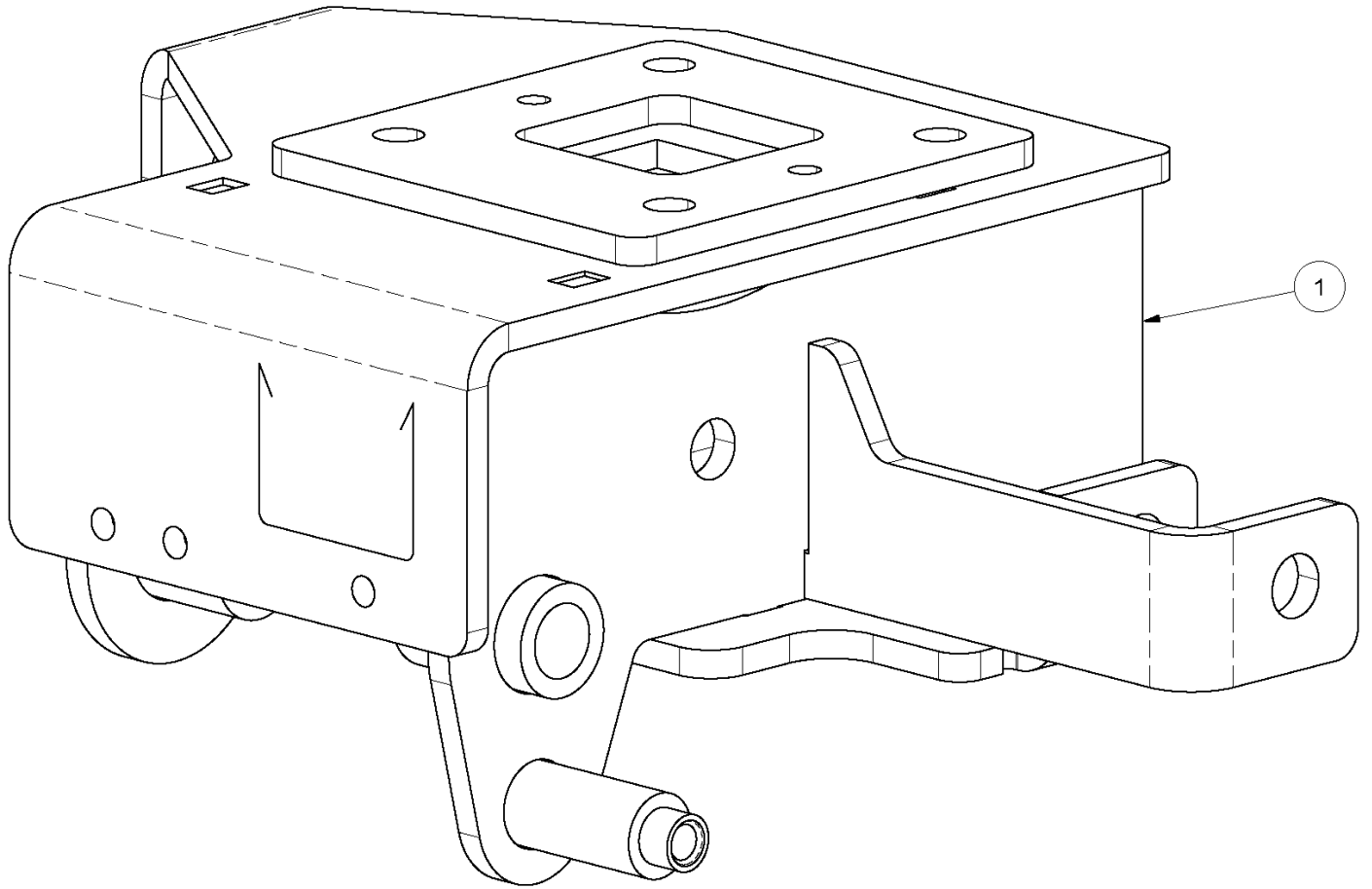
ITEM	DESCRIPTION	QTY
1	1/2 HARDENED WASHER, ZINC PLATED	4
2	1/2 UNC HEX TOP LOCK NUT (GR C)	2
3	1/2 X 3 1/4 UNC HEX CAP SCR (GR 5)	2
4	SHOCK ABSORBER, ROI	1



4CM00230 - SERVICE KIT - STRAP

ITEM	DESCRIPTION	QTY
1	5/8 UNC HEX NYLOCK NUT	2
2	5/8 X 3 1/2 UNC HEX CAP SCR (GR 8)	1
3	5/8 X 6 1/2 UNC HEX CAP SCR (GR 8)	1
4	SPACER-LOOP, STRAP	1
5	STRAP	1





4CM00231 - SERVICE KIT - TOP BRACKET		
ITEM	DESCRIPTION	QTY
1	BRACKET-MOUNT, LATCH	1



LINK MANUFACTURING, LTD.
223 15TH ST. NE, SIOUX CENTER, IA 51250
1-800-222-6283 www.linkmfg.com