

Cabmate

ford

freightliner

gmc

international

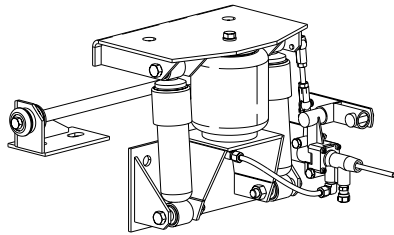
kenworth

mack
marmon

peterbilt

sterling

volvo
western star

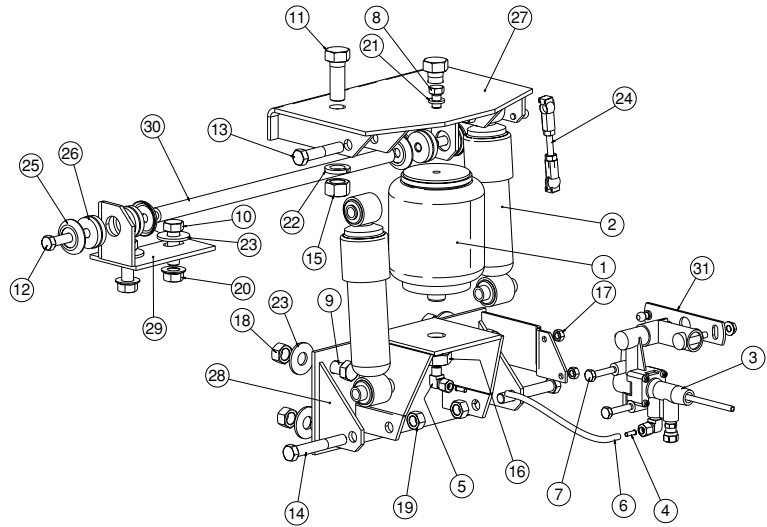
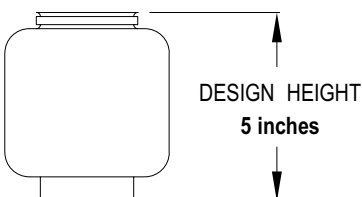


**CABMATE MODEL
KWB400-A
2540-0000 AFTERMARKET**

FITS: Fits most Kenworth T-400A and T-450 conventional tractors manufactured **before June of 1992**. It replaces the original rear cab support, Kenworth Part No. K235-1534.

Wt: 21 lbs. Wt Added: 16 lbs.
Installation Time: 3-4 hours

NOTES:



PARTS LIST

1	1102-0023	SPRING-AIR	1
2	1201-0012	SHOCK ABSORBER	2
3	1301-0010	HEIGHT CONTROL VALVE	1
4	1302-1038	.25 TUBE SUPPORT	2
5	1302-1105	ELBOW, 1/4 TB 1/8 M-NPT	1
6	1302-0090	.25 AIRLINE	5"
7	1401-0816	1/4 X 2 UNC HEX CAP SCREW (GRADE 5)	2
8	1401-1205	3/8 X 5/8 UNC HEX CAP SCREW (GRADE 5)	1
9	1401-1610	1/2 X 1 1/4 UNC HEX CAP SCREW (GRADE 5)	4
10	1401-1612	1/2 X 1 1/2 UNC HEX CAP SCREW (GRADE 5)	2
11	1401-2014	5/8 X 1 3/4 UNC HEX CAP SCREW (GRADE 5)	2
12	1403-1218	3/8 X 2 1/4 UNF HEX CAP SCREW (GRADE 5)	2
13	1403-1418	7/16 X 2 1/4 UNF HEX CAP SCREW (GRADE 5)	2
14	1403-1424	7/16 X 3 UNF HEX CAP SCREW (GRADE 5)	2
15	1470-2000	5/8 UNC HEX NUT (GRADE B)	2
16	1475-2400	3/4 UNF JAM NUT	1
17	1476-0800	1/4 UNC HEX CENTER LOCK NUT (GRADE B)	2
18	1476-1600	1/2 UNC HEX CENTER LOCK NUT (GRADE B)	4
19	1477-1400	7/16 UNF HEX CENTER LOCK NUT (GRADE B)	4
20	1480-1601	1/2 UNC TOP LOCK FLANGE NUT (GRADE F)	2
21	1485-1200	3/8 LOCK WASHER	1
22	1485-2000	5/8 LOCK WASHER	2
23	1487-1600	1/2 TYPE A PLAIN WASHER	6
24	1500-0240	LINKAGE-VALVE, HEIGHT CONTROL (3.25)	1
25	1500-0820	WASHER-BUMPER	4
26	1500-0830	BUMPER-RUBBER	4
27	2540-1000	UNIT TOP	1
28	2540-2000	UNIT BOTTOM	1
29	2540-3000	LATERAL CONTROL ROD MOUNT	1
30	2540-3003	LATERAL CONTROL ROD	1
31	2990-0700	ASSEMBLY-ARM, VALVE	1
NS	1350-0000	KIT-PROTECTION, PRESSURE	1